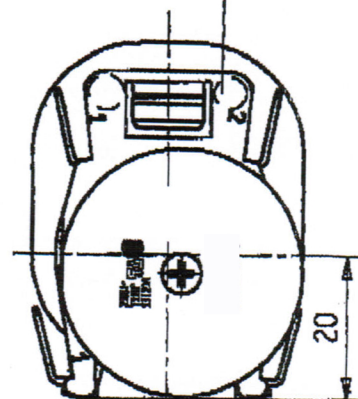
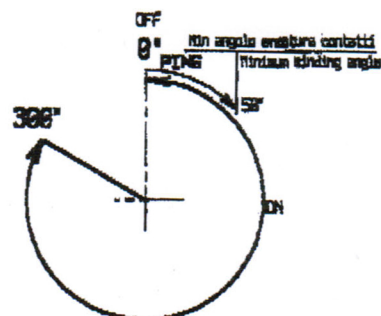


Marchi Approvals

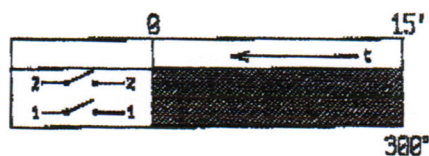


ZONA PER STAMPILATURA
STAMPING ZONE

- Interruttore a 2 vie ad apertura rapida.
- Portata 16(3)A 250V ~ +125° per marchi europei.
- Portata 13(2)A 250V ~ +110° per marchi .
- Segnalazione acustica di fine ciclo (PING).
- Temporizzazione 15' su 300°.
- Attacchi faston 6.3x0.8 mm.
- Temperatura d'impiego +125°.
- Errore di azzeramento ±3°.



Angolo di carica
Maximum winding angle



- Two poles switch timer.
- Rating(EUR): 16(3)A 250 VAC 125°
- Rating (UL/CSA): 13(2)A 250 VAC 110°
- Running times: 15' on 300°.
- Gong signal
- Terminals: 6.3x0.8 mm fastons
- Operating temperature: +125°
- Shaft orientation tolerance: ±3°.

TOLLERANZE GEN.
±0.5

MAT.

SCALA 1:1

PART.

TIMER

DISEGNO N.

2607

