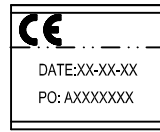


Adjusting shaft and adjusting nut the material for the: A3



Printing on left side

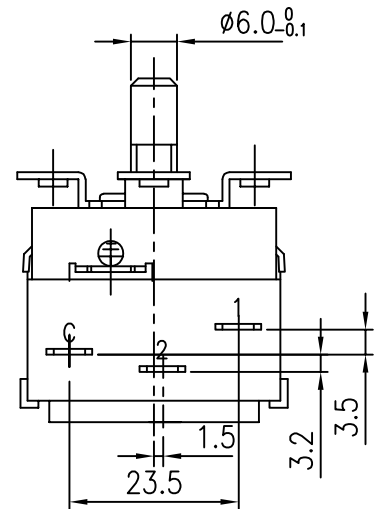


Label with production date and lot number

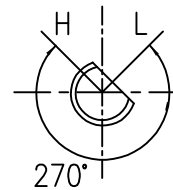
Capillary covered with PVC tube (black) (1900)

2000±50

Stainless Steel

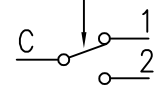


Rotating Angle



Electric diagram:

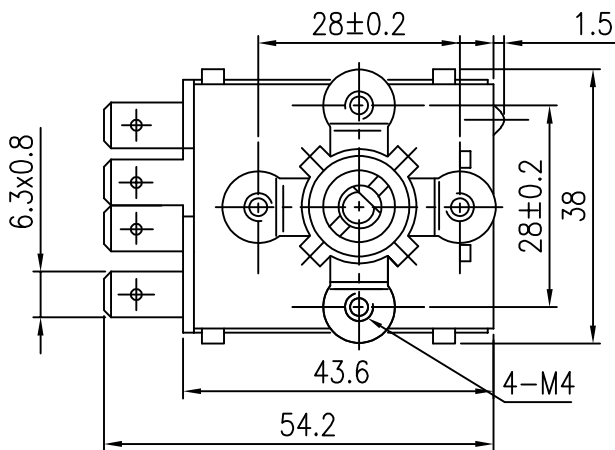
S.P.D.T



Terminal C-1 opens at temperature rise
Terminal C-2 closes at temperature rise

Ø6.5±0.2

98±3



The scheme shows the L temperature position

REMARK:

The operating temperature above is at 25°C ambient temperature (temperature around the switch body), If the ambient temperature changes, the operating temperature needs modified.

Correction Factor: C=-0.24K/K

The product has been given the following safety approval: ENEC

Submerged capillary length :50±30mm.

Technical Parameter

- H/off: 90±4°C Diff: 4±2°C
- L/off: (0°C)
- Breaking capacity
C-1 15(2.5)A 400V~
C-2 2.5(0.4)A 400V~
- Minimum Current: 200mA
- Insulation Resistance >100M Ω
- Dielectric Strength: AC 2000V 1min
- Temperature change speed: <1.0°C/min
- Maximum temperature:
Around the Sensing Body T110°C
Around the Sensing Bulb 120°C
- Rotating Torque of
Adjustment Shaft: <0.4Nm
- Life of Product: 100,000 Cycles

SIGN	A4
DATE	Jan.03.2020

DRN	A. Falzone	T&P srl	Code: TP-812P.90
CHD			Drawing: ZA90C-558-12P
ENG		Galliate (No) ITALY	Customer code:
APPR		WIRING DIAGRAM	Liquid Expansion Thermostat